

Datafeed Toolbox Release Notes

The “Datafeed Toolbox 1.4 Release Notes” on page 1-1 describe the changes introduced in the latest version of the Datafeed Toolbox, which is available via Web download.

If you are upgrading from a release earlier than Release 13, you should also see:

- “Datafeed Toolbox 1.3.1 Release Notes” on page 2-1
- “Datafeed Toolbox 1.3 Release Notes” on page 3-1
- “Datafeed Toolbox 1.2 Release Notes” on page 4-1

Printing the Release Notes

If you would like to print the Release Notes, you can link to a PDF version.

Datafeed Toolbox 1.4 Release Notes

1

New Feature	1-2
--------------------------	------------

Datafeed Toolbox 1.3.1 Release Notes

2

Installation Note	2-2
FT Interactive Data Server	2-2

Datafeed Toolbox 1.3 Release Notes

3

New Features	3-2
Hyperfeed Support Added	3-2
Hyperfeed Function Summary	3-2

Datafeed Toolbox 1.2 Release Notes

4

Introduction to the Datafeed Toolbox	4-2
Learning More About the Datafeed Toolbox	4-2
New Features	4-3
Support for IDC and Yahoo	4-3

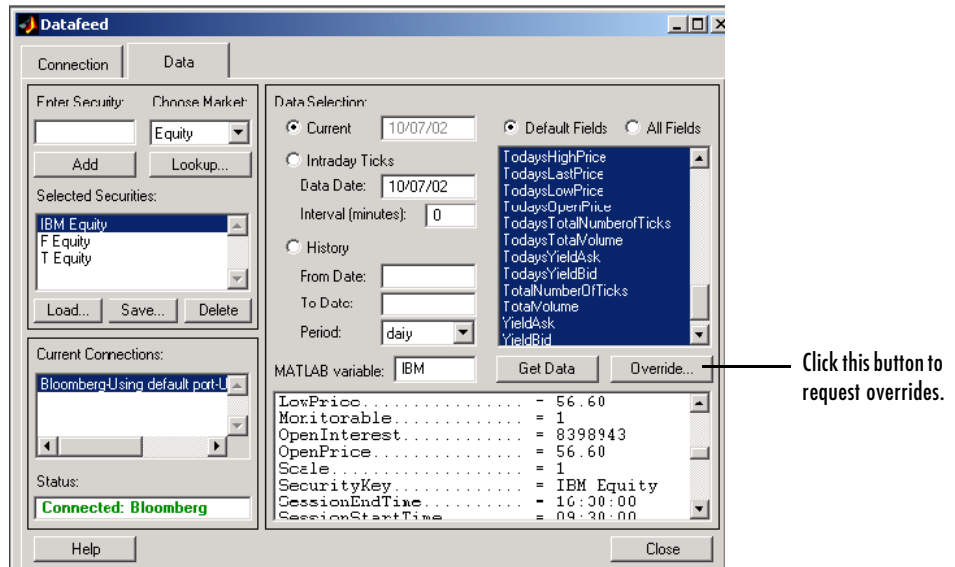
Datafeed Toolbox 1.4

Release Notes

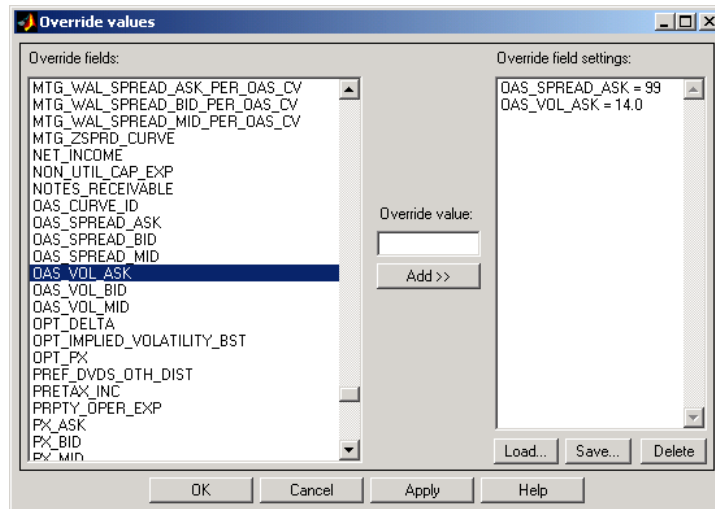
Installation Note	1-2
FT Interactive Data Server	1-2

New Feature

Users can now set overrides on data obtained from Bloomberg. The **Data** tab has been modified to allow you to request overrides.



When you click on the **Override** button, the **Override values** dialog box appears.



From this dialog box you can add a new override, load or delete an existing override, or save overrides.

The Bloomberg fetch command has also been modified to allow override setting.

Datafeed Toolbox 1.3.1

Release Notes

Installation Note	2-2
FT Interactive Data Server	2-2

Installation Note

Note The installation note below applies to Version 1.3.1, as it has to the installation of the Datafeed Toolbox since Version 1.2.

FT Interactive Data Server

The default location for installing FT Interactive Data client software is C:\RPLUS.

For successful operation after installation, add this directory to the Microsoft Windows system path:

- For Windows 98, enter this directory in the autoexec.bat file.
- For Windows NT, use the **System** Control Panel to add this directory to the path.

Datafeed Toolbox 1.3

Release Notes

New Features	3-2
Hyperfeed Support Added	3-2
Hyperfeed Function Summary	3-2

New Features

This section introduces the new features and enhancements added in the Datafeed Toolbox 1.3 since Datafeed Toolbox 1.2 (Release 12.0).

For information about Datafeed Toolbox features that are incorporated Version 1.2, see “New Features” on page 4-3 in the Datafeed Toolbox 1.2 Release Notes.

Hyperfeed Support Added

The Datafeed Toolbox Version 1.3 adds the Hyperfeed data server to the list of previously supported servers (i.e., Bloomberg, FT Interactive Data, and Yahoo). Version 1.3 provides functions to obtain price, profile, historical and tick data from Hyperfeed.

Hyperfeed Function Summary

Function	Purpose
close	Close connection
fetch	Request data
get	Get connection properties
hyperfeed	Connect to Hyperfeed
isconnection	True if valid connection

Datafeed Toolbox 1.2

Release Notes

Introduction to the Datafeed Toolbox	4-2
Learning More About the Datafeed Toolbox	4-2
New Features	4-3
Support for IDC and Yahoo	4-3

Introduction to the Datafeed Toolbox

The Datafeed Toolbox was introduced after Release 11.1.

The Datafeed Toolbox effectively turns your MATLAB workstation into a financial data acquisition terminal. Using the Datafeed Toolbox, you can download a wide variety of security data from financial data servers into your MATLAB workspace. Then, you can pass this data to MATLAB or to another toolbox, such as the Financial Time Series Toolbox, for further analysis.

Learning More About the Datafeed Toolbox

The Datafeed Toolbox documentation describes the product in detail. You can also read about the Datafeed Toolbox in the products section of the MathWorks Web page (<http://www.mathworks.com/products/datafeed/>).

New Features

This section introduces the new features and enhancements added in the Datafeed Toolbox 1.2 after the Datafeed Toolbox 1.0 (Release 11.1).

Support for IDC and Yahoo

The Datafeed Toolbox now supports connections to Interactive Data Corporation (IDC) and Yahoo data servers in addition to Bloomberg.

